



18 Hudson Road, Liverpool, L31 5PA

Offers Over £150,000

NO CHAIN - Requiring some updating this is a renovation project and opportunity to create your perfect home or flip for a investment.

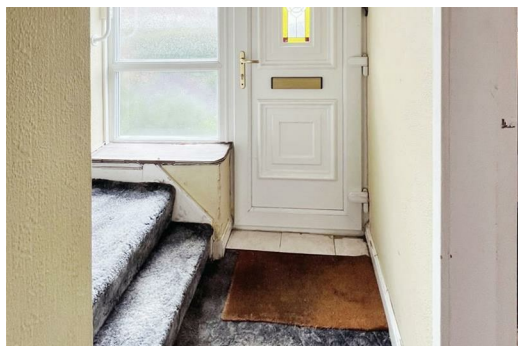
This 3 bedroom mid-terrace property has been extended to the rear with a conservatory over looking a mature, sunny garden including your own apple tree.

Downstairs there is a front dining room, rear living room, breakfast kitchen, utility and conservatory. Upstairs there are 3 bedrooms, bathroom with separate WC which could be knocked through to create a large luxury family bathroom.

Located in popular area with families and close to schools, shops and motorways for commuting.

Get in touch straight away to arrange a viewing!

Tenure: Freehold Council tax band: B



Hall

Dining Room

10'9" x 8'3" (3.28 x 2.53)

To the front aspect

Living Room

16'10" x 10'3" (5.15 x 3.13)

Breakfast Kitchen

19'0" x 5'8" (5.80 x 1.75)

Utility

6'7" x 5'8" (2.02 x 1.75)

Conservatory

12'5" x 6'7" (3.79 x 2.02)

Bedroom 1

14'6" x 10'0" (4.43 x 3.05)

Bedroom 2

11'3" x 8'8" (3.45 x 2.65)

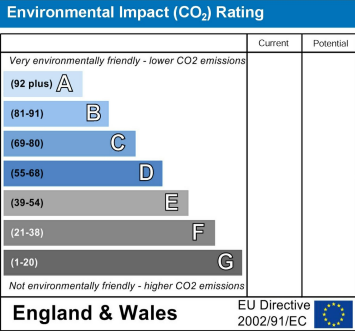
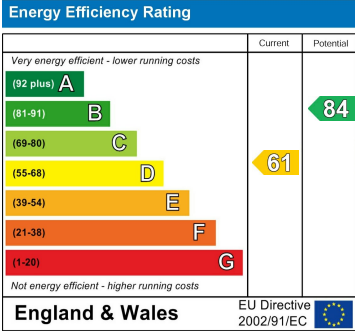
Bedroom 3

10'0" x 6'0" (3.05 x 1.84)

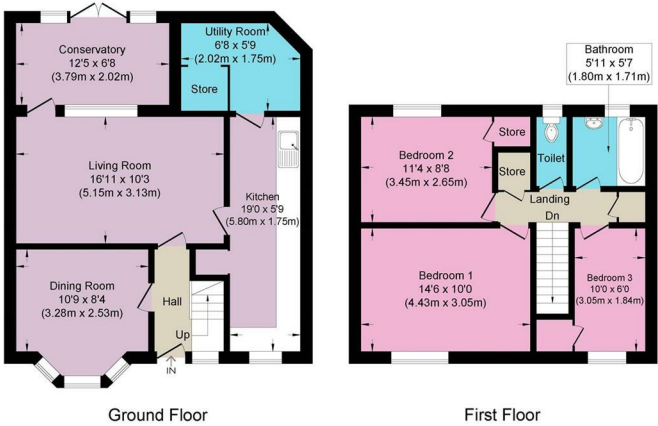
Bathroom

5'10" x 5'7" (1.80 x 1.71)

Toilet



Approximate Gross Internal Area = 96.40 sq m / 1037.64 sq ft
Illustration for identification purposes only, measurements are approximate, not to scale.



Approximate Gross Internal Area = 96.40 sq m / 1037.64 sq ft
Illustration for identification purposes only, measurements are approximate, not to scale.



Berkeley Shaw Estate Agents Limited.
Company No. 0784754

Berkeley Shaw Real Estate Limited.
Company No. 05206927

