



## Regency Chambers, 7 Temple Lane, Liverpool, Merseyside L2 5BB

£800 PCM

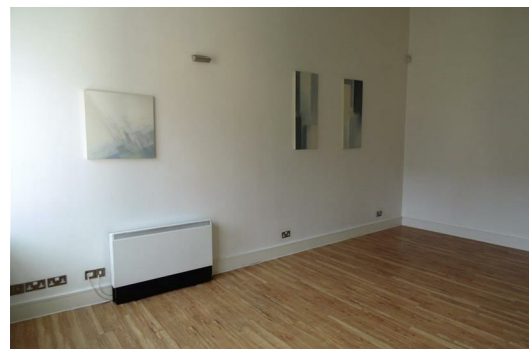
Welcome to Regency Chambers in the heart of Liverpool! We have a charming UNFURNISHED One Bedroom Apartment TO LET. This apartment boasts an open plan cosy reception/ Kitchen, perfect for relaxing or entertaining guests. With one spacious bedroom and a well-appointed bathroom, this property offers comfort and convenience in one package.

Situated in a prime location, this apartment is ideal for those who value easy access to transport links, making commuting a breeze. Just a short stroll away lies the iconic Albert Dock, where you can enjoy leisurely walks by the water or explore the many attractions it has to offer.

Convenience is key with this property, as it is surrounded by a variety of shops and restaurants, ensuring that you have everything you need right at your doorstep. Whether you're looking for a quick bite to eat or a spot of retail therapy, you'll find it all within easy reach.

Don't miss out on the opportunity to make this apartment your new home. Embrace city living at its finest and experience the vibrant culture and amenities that Liverpool has to offer. Book a viewing today and discover the endless possibilities that await you at Regency Chambers!

Council Tax Band: B  
Deposit: £800.00  
Minimum Term: 12 Months



## Hallway

Entrance door, laminate flooring,

## Open Plan Lounge Kitchen

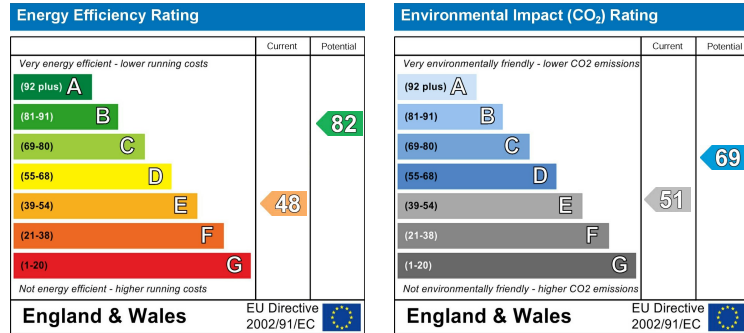
Single glazed windows, laminate flooring, electric heaters, kitchen comprises of a range of fitted base and wall units with stainless steel 1 1/2 sink with mixer tap, electric hob, extractor hood, oven, washing machine and fridge freezer

## Bedroom

Windows, laminate floor electric heaters, storage cupboard with water cylinder

## Bathroom

Fully Tiled walls and flooring, panelled bath with shower over, shower screen, sink and low level w.c.



Berkeley Shaw Estate Agents Limited.  
Company No. 0784754

Berkeley Shaw Real Estate Limited.  
Company No. 05206927

