



## West Tower, 8 Brook Street, Liverpool, Merseyside L3 9PH

### £1,350 PCM

Live the high life in this 26th floor, spacious TWO BED PART FURNISHED apartment in the prestigious West Tower.

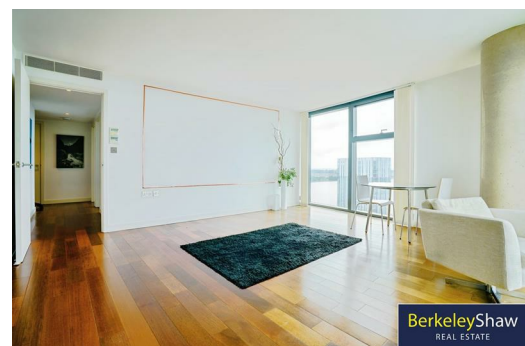
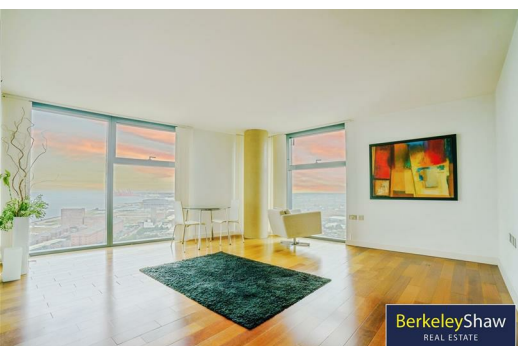
Situated in the most iconic building in Liverpool, Berkeley Shaw are pleased to offer TO LET this luxury two bedroom apartment with stunning views.

Comprising of an entrance hall, lounge with picture windows with views across the city and the River Mersey, fitted kitchen with dishwasher, integrated fridge and freezer, oven and hob. There are two bedrooms, with the master benefiting from an en-suite shower room and fitted wardrobes.

Externally there are well kept communal areas with lifts to all floors and 24hr concierge.

\*electricity for this building is on a block supply and recharged to the tenants via the block management each month the supplier is unable to be change supplier  
\*\*Furnishings included is what is in the apartment if further furniture is needed this can be agreed and the rental price will be adjusted to reflect a furnished apartment

Council Tax Band: D  
Deposit: £1350.00  
Minimum Tenancy Term: 12 Months



## Hallway

Wooden Flooring, entrance door, walk in cupboard with washing machine and water cylinder

## Open Plan Lounge Diner

Wooden flooring double glazed floor to ceiling windows on both side of the room

## Kitchen

Wooden flooring, kitchen comprises of a range of fitted wall and base units, stainless steel sink with mixer tap, electric under counter oven and electric hob, dishwasher, under counter fridge, under counter freezer

## Bedroom 1

double glazed floor to ceiling windows, carpet, bedside tables, bed and mattress

## Ensuite Shower Room

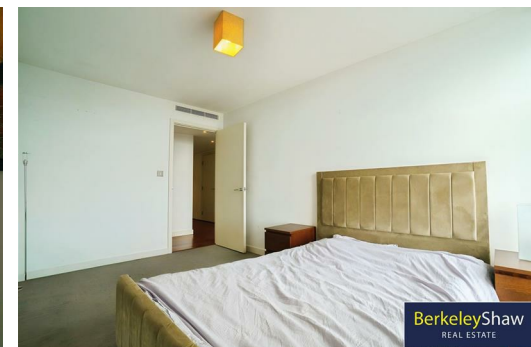
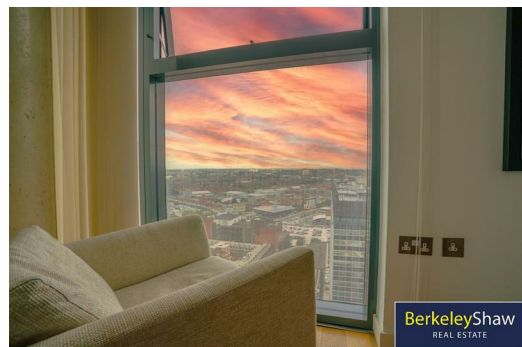
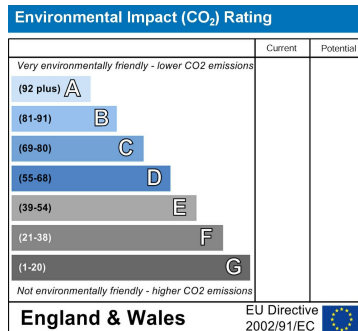
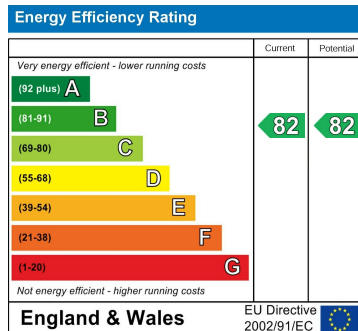
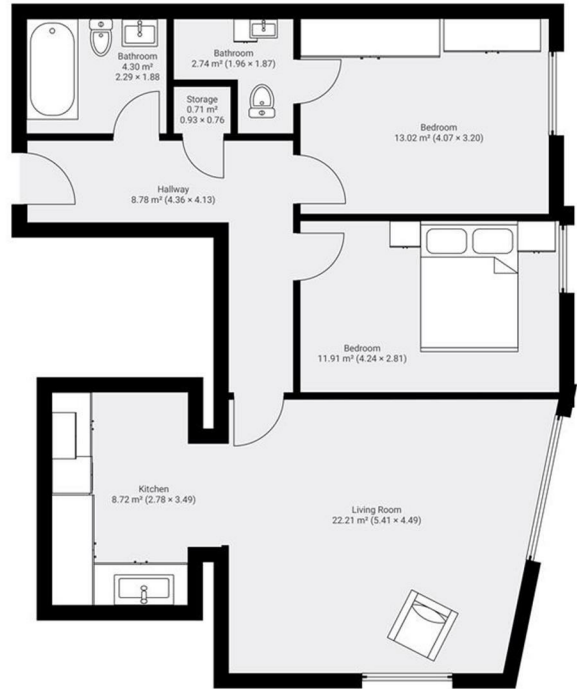
fully tiled walk in shower with glass screen, wash basin and low level w.c.

## Bedroom 2

double glazed floor to ceiling windows, carpet, large wardrobes, chest of drawers and bedside table

## Bathroom

Fully tiles walls and flooring, panelled bath with shower over, low level w.c. and wash basin



Berkeley Shaw Estate Agents Limited.  
Company No. 0784754

Berkeley Shaw Real Estate Limited.  
Company No. 05206927

