



## 109 Central Avenue, Southport, PR8 3ED

### £975 Per Month

Welcome to this charming end-terraced house located on Central Avenue in the sought-after area of Southport.

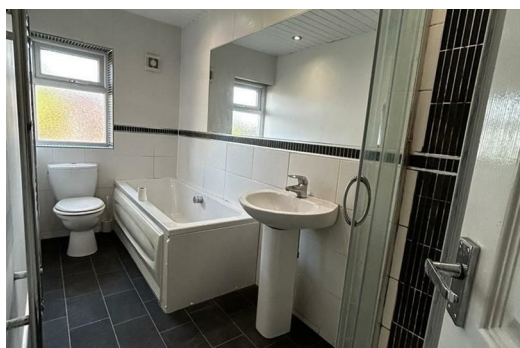
This delightful property boasts a newly refurbished interior, offering a perfect blend of modern amenities and classic charm. As you step inside, you are greeted by a cosy reception room, ideal for relaxing or entertaining guests.

With three inviting bedrooms, there is ample space for a growing family or those in need of a home office. The bathroom provides a convenient and stylish space for your daily routines.

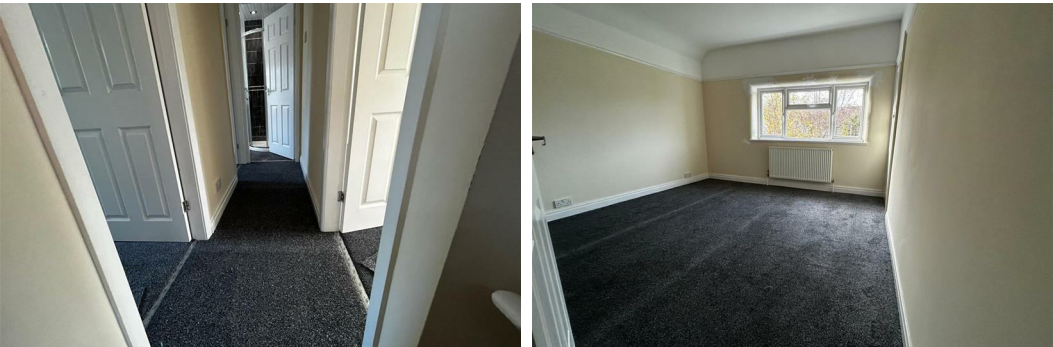
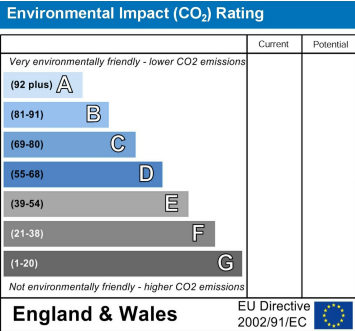
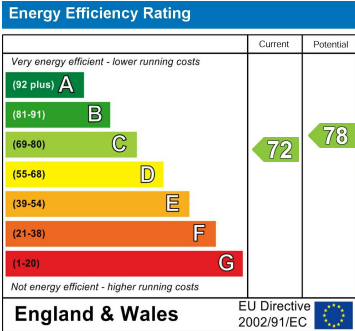
The private driveway offers parking for one vehicle, ensuring convenience for homeowners. The cul-de-sac location provides a peaceful and safe environment, perfect for families with children or those seeking tranquility.

Step outside into the garden, a lovely outdoor space where you can enjoy al fresco dining, gardening, or simply basking in the sunshine.

Don't miss the opportunity to make this house your own and experience the best of Southport living. Contact us today to arrange a viewing and start envisioning your future in this lovely home on Central Avenue.



- Hallway
- Lounge
- Kitchen/ Dining room
- Master bedroom
- Bedroom 2
- Bedroom 3
- Garden



Berkeley Shaw Estate Agents Limited.  
Company No. 0784754

Berkeley Shaw Real Estate Limited.  
Company No. 05206927

