



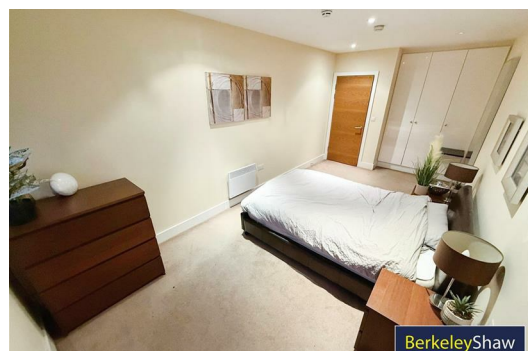
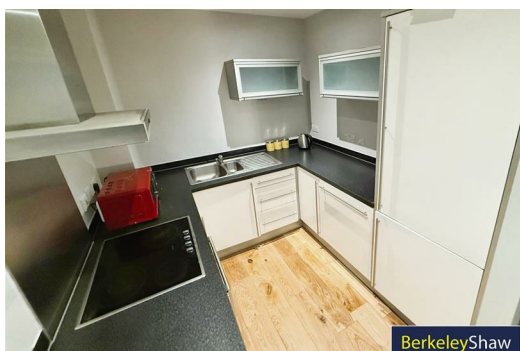
## Unity Building, 3 Rumford Place, Liverpool, Merseyside L3 9BZ

**£875 PCM**

Berkeley Shaw are pleased to offer TO LET this ONE BEDROOM FURNISHED apartment located on the third floor of Unity Building, Liverpool. Water front is within short walking distance from apartment and local transportation links are accessible throughout Liverpool City Centre. The property benefits from 24 hour concierge desk, communal courtyard and resident's gymnasium, lift access to all floors. Accommodation comprises of entrance hall, open plan living room, fully fitted kitchen, spacious bedroom with built in storage and fully tiled bathroom. Additional benefits include large balcony, picture windows, wooden flooring and under floor heating.

Please note, this apartment does not include parking.

Minimum term: 12 months  
Deposit: £875  
Council Tax Band: C



Hallway

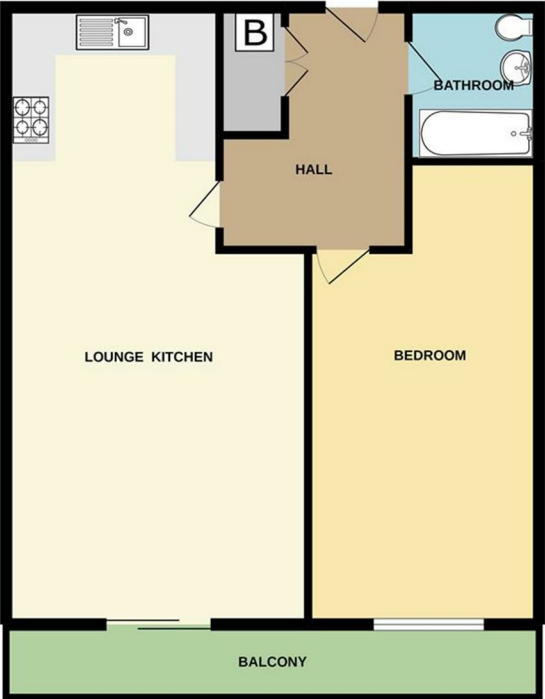
Open Plan Lounge Kitchen

Bedroom 1

Bathroom

Energy Efficiency Rating		
	Current	Potential
Very energy efficient - lower running costs		
(92 plus) A		
(81-91) B		
(69-80) C		
(55-68) D		
(39-54) E		
(21-38) F		
(1-20) G		
Not energy efficient - higher running costs		
	80	87
England & Wales	EU Directive 2002/91/EC	

Environmental Impact (CO <sub>2</sub> ) Rating		
	Current	Potential
Very environmentally friendly - lower CO <sub>2</sub> emissions		
(92 plus) A		
(81-91) B		
(69-80) C		
(55-68) D		
(39-54) E		
(21-38) F		
(1-20) G		
Not environmentally friendly - higher CO <sub>2</sub> emissions		
	80	81
England & Wales	EU Directive 2002/91/EC	



Whilst every attempt has been made to ensure the accuracy of the floorplan contained here, measurements of doors, windows, rooms and any other items are approximate and no responsibility is taken for any error, omission or mis-statement. This plan is for illustrative purposes only and should be used as such by any prospective purchaser. The services, systems and appliances shown have not been tested and no guarantee as to their operability or efficiency can be given.  
Made with Metreplan 6.0202

