

BerkeleyShaw

14 College Avenue, Liverpool, L23 0SS

£180,000

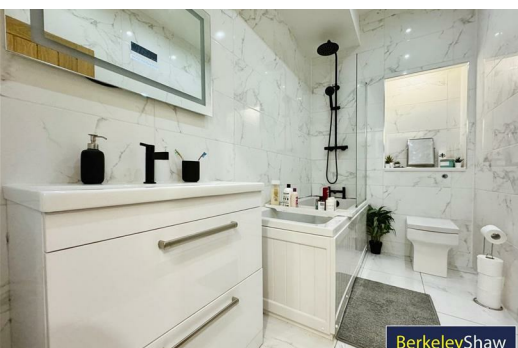
****Stylish Two-Bedroom Apartment in the Heart of Crosby****

Welcome to this beautifully presented two-bedroom upper-floor apartment, nestled in the highly sought-after Merchant Court development on College Avenue. Perfectly positioned in the vibrant heart of Crosby, this modern property offers the ideal blend of convenience and comfort. With a wide array of local amenities right at your doorstep—including top-rated schools, shops, and restaurants—everything you need is within easy reach.

Step inside and be greeted by a bright and welcoming interior, featuring contemporary decor and high-quality finishes throughout. The spacious open-plan kitchen, dining, and living area provides a perfect space for both everyday living and entertaining. The kitchen is a standout, with sleek quartz worktops, a breakfast bar, and a full suite of integrated appliances, offering both style and practicality.

The apartment offers two well-sized bedrooms, one of which is currently being used as a luxurious dressing room, providing flexibility to suit your lifestyle. The modern three-piece bathroom adds to the overall appeal, providing a stylish and functional space for relaxation.

Additional benefits include the convenience of off-street parking, double glazing & gas central heating.



BerkeleyShaw



BerkeleyShaw



BerkeleyShaw

Communal hallway
Stairs access to upper floors.

Hallway
Vertical radiator, intercom system & herringbone style flooring.

Open plan kitchen diner/living area
Range of wall & base units, quartz work tops, breakfast bar, electric hob, electric oven, extractor hood, herringbone style flooring, integrated microwave, integrated fridge freezer, washing machine, double glazed window & sky light.

Bedroom 1
Double glazed window & radiator.

Bedroom 2
Double glazed window & radiator.

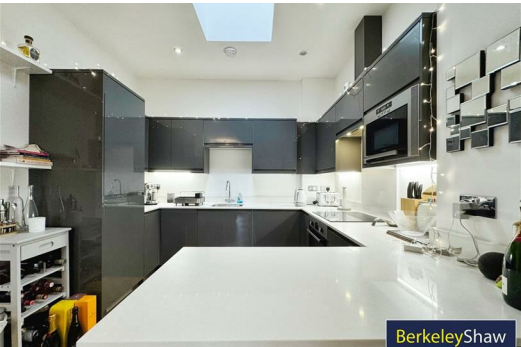
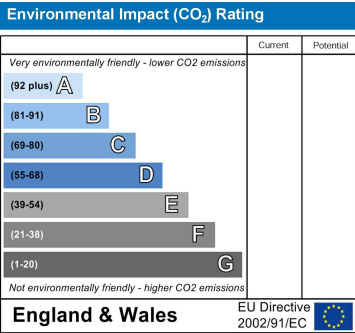
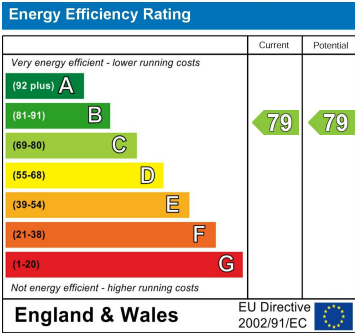
Bathroom
Wc, rectangular basin with storage, , vertical radiator, bath with glass shower screen & thermostatic shower unit with hand shower,

Externally
Resident parking

GROUND FLOOR



While every attempt has been made to ensure the accuracy of the floorplan contained here, measurements of doors, windows, rooms and any other items are approximate and no responsibility is taken for any error, omission or mis-statement. This plan is for illustrative purposes only and should be used as such by any prospective purchaser. The services, systems and appliances shown have not been tested and no guarantee as to their operability or efficiency can be given.
Made with Measure 3/2025



Berkeley Shaw Estate Agents Limited.
Company No. 0784754

Berkeley Shaw Real Estate Limited.
Company No. 05206927

