



16 Somerton Street, Liverpool, Merseyside L15 4NF

£825 PCM

Berkeley Shaw are pleased to offer TO LET this TWO Bedroom UNFURNISHED Mid Terraced Property in Somerton Street L15.

Set out across two floors, the accommodation briefly comprises; vestibule, spacious open plan living/dining room with gas fire and flooded with natural light via the bay. To the rear of the property is a fitted kitchen with an gas hob and electric oven, plumbing for washing machine and freestanding fridge freezer in storage cupboard. Completing the ground floor layout is a three-piece family bathroom. To the first floor, the landing gives access to two generously sized bedrooms, both with fitted wardrobes. Externally, the property has a small rear yard providing access to the rear alley. Further benefits include gas central heating, double glazing.

Get in touch straight away to arrange a viewing!

Deposit: £895.00

Council Tax Band: A

Minimum Tenancy Term: 12 months



Vestibule

Tiled floor.

Living Room

Double glazed windows to bay, 2 x radiators, gas fire & laminate floor.

Kitchen

Radiator, door to rear yard, range of wall & base units, gas hob, electric oven, extractor hood, tiled floor, tiled splash back & stainless steel sink with mixer tap and drainer.

Inner hall

Storage cupboard, freestanding Fridge Freezer

Bathroom

Double glazed window, WC, basin, radiator, tiled floor & bath with electric shower.

Landing

Carpeted Staircase

Bedroom 1

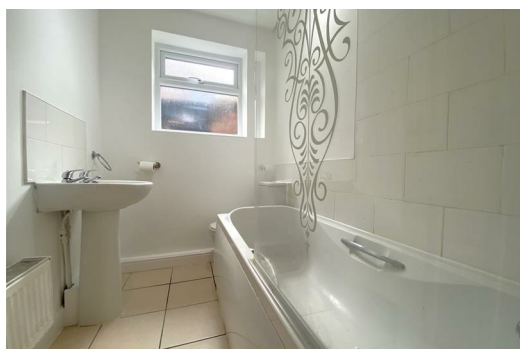
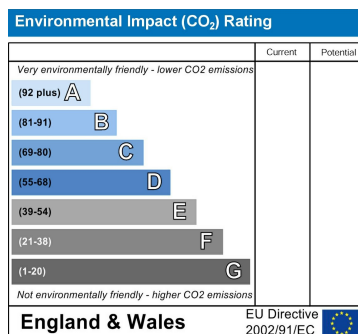
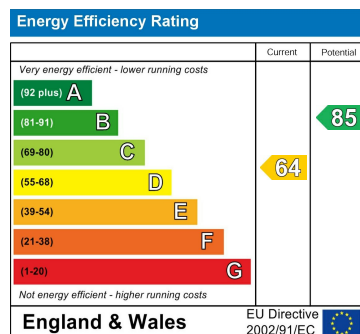
Double glazed window, laminate floor, fitted wardrobes & radiator.

Bedroom 2

Laminate floor, double glazed window, radiator, fitted wardrobe & storage cupboard with combi boiler.



Whilst every attempt has been made to ensure the accuracy of the floorplan contained here, measurements of doors, windows, rooms and any other items are approximate and no responsibility is taken for any error, omission or mis-statement. This plan is for guidance purposes only and should be used as such by only prospective purchasers. The services, systems and appliances shown have not been tested and no guarantee as to their operation or efficiency can be given. Made with Metreplan ©2021



Berkeley Shaw Estate Agents Limited.
Company No. 0784754

Berkeley Shaw Real Estate Limited.
Company No. 05206927

