



38 Basing Street, Liverpool, L19 1QS

£170,000

Welcome to this charming two-bedroom end-terrace home situated on Basing Street, Garston, just a stone's throw from Garston Park and within easy reach of multiple train stations, providing quick and convenient access to both Liverpool City Centre and Manchester.

Stepping inside, you are welcomed by a vestibule leading into a bright and airy open-plan living/dining room, featuring stylish laminate flooring and a large bay window that floods the space with natural light. To the rear, the home boasts a modern extended kitchen, complete with a range of integrated appliances and a skylight that enhances the sense of space and brightness.

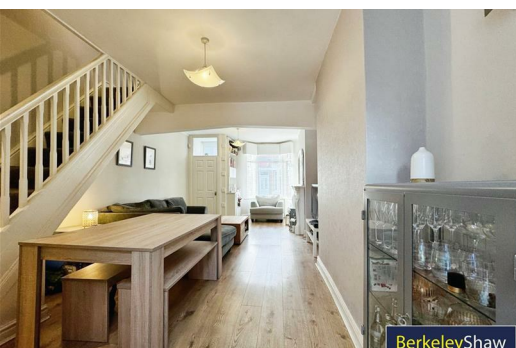
Upstairs, there are two double bedrooms, the master boasting fitted wardrobes and a feature cast iron fireplace. Completing the first floor is a contemporary shower room, finished to a high standard.

Externally, the property benefits from a walled and gated decked rear yard, offering a low-maintenance outdoor space. Additional features include gas central heating and double glazing throughout.

This home is ideal for first-time buyers, downsizers, or buy-to-let investors looking for a well-presented property in a sought-after location.

Don't miss out—contact us today to arrange a viewing!

**** We must make you aware under the Estate Agency Act that the owner of this home is related to a member of staff ****



Vestibule

Living/dining room

Double glazed window to bay, 2 x radiators, built in storage, laminate floor and open aspect through to the rear kitchen.

Kitchen

Extended kitchen with a range of wall & base units, UPVC door to rear garden, skylight, double glazed window, induction hob, double electric oven, radiator, extractor hood, integrated microwave, tiled back splash & integrated dishwasher.

Landing

Loft access.

Bedroom 1

Fitted wardrobes, combi boiler, double glazed window, radiator & cast iron feature fireplace.

Bedroom 2

Laminate floor, double glazed window & storage cupboard.

Shower room

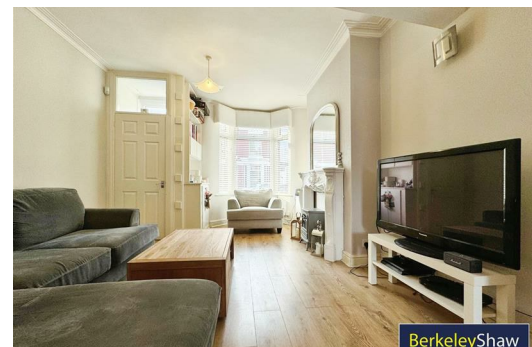
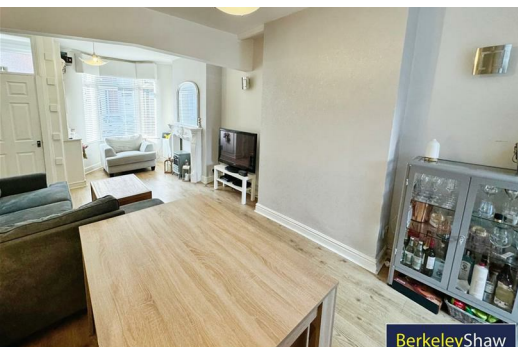
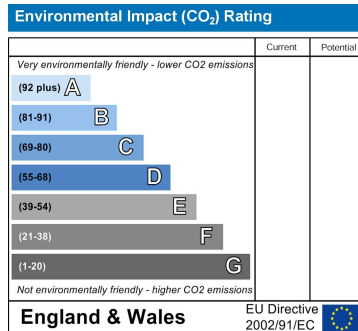
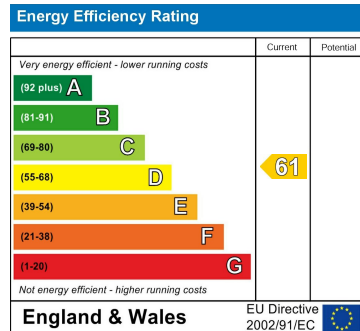
Double glazed window, tiled floor, part tiled walls, towel radiator, WC, basin with storage & shower unit.

Externally

Walled & gated rear yard with decking.



While every attempt has been made to ensure the accuracy of the floorplan contained herein, measurements of floor, window, doors and any other items are approximate and no responsibility is taken for any error, omission or misstatement. This plan is for illustrative purposes only and should be used as a guide only. Prospective purchasers should verify the accuracy of the floorplan and any other information given in this advertisement by visiting the property and measuring the property themselves. The accuracy of the floorplan and any other information given in this advertisement is not guaranteed. Map not to scale.



Berkeley Shaw Estate Agents Limited.
Company No. 0784754

Berkeley Shaw Real Estate Limited.
Company No. 05206927

