



## 16 Birchfield Way, Liverpool, L31 4DS

£1,000 PCM

Viewings highly recommended.

This bungalow is perfect with its appealing features and quiet location, this property is not to be missed.

Nestled in the tranquil surroundings of Birchfield Way, Lydiate, this charming two-bedroom bungalow offers a perfect blend of comfort and convenience. Ideal for those seeking a peaceful retreat, the property is situated in a quiet area, ensuring a serene living environment.

Upon entering, you will find a welcoming reception room that provides a warm and inviting space for relaxation or entertaining guests. The bungalow features two well-proportioned bedrooms, each offering ample natural light and a cosy atmosphere, making them perfect for restful nights.

One of the standout features of this bungalow is the large garden, which presents an excellent opportunity for outdoor activities, gardening, or simply enjoying the fresh air. It is an ideal space for anyone who appreciates the beauty of nature.

Additionally, the property includes parking for one vehicle, adding to the convenience of living in this delightful home.

Council tax band C

EPC D

Deposit required £1000



Hallway

Bedroom 2

Double Bed, Large radiator, fitted wardrobes

Master Bedroom

Double bed, wardrobe, large radiator

Bathroom

White suite small radiator, enclosed shower

Lounge

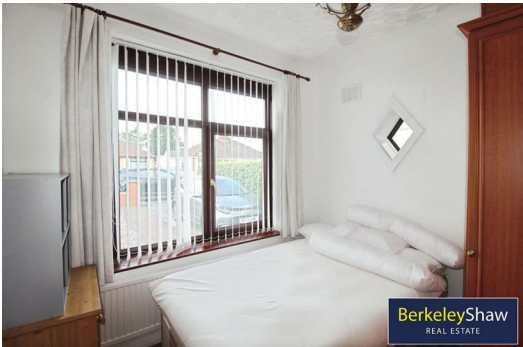
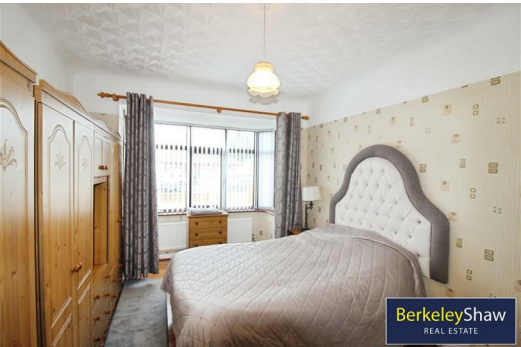
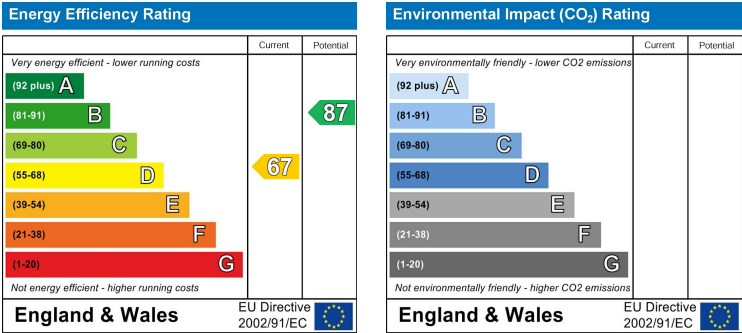
Electric fireplace with surround, large radiator, single chair and 2 seater settee

Kitchen

Sink unit, fitted electric oven and hob, washing machine

Conservatory

dining room table with 4 chairs, tiled flooring



Berkeley Shaw Estate Agents Limited.  
Company No. 0784754

Berkeley Shaw Real Estate Limited.  
Company No. 05206927

