

The Summit, 12 Parliament Street, Liverpool, L8 5QX

£1,250 PCM

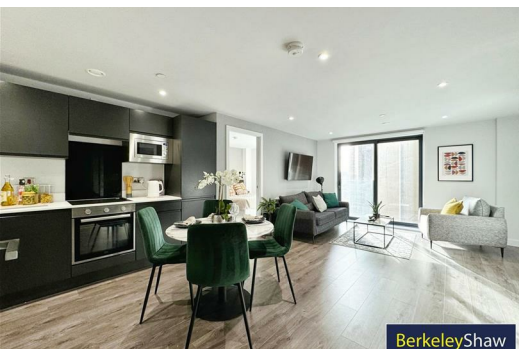
Welcome to this stunning two-bedroom apartment located on the sixth floor at The Summit, Parliament Street in the vibrant city of Liverpool. Situated in the ever popular Baltic Triangle, this spacious apartment is TO LET FULLY FURNISHED 2 BEDROOM and suitable for anyone looking for a City Centre base.

Upon entering, you are greeted by a spacious open plan kitchen diner/living space, perfect for entertaining guests or simply unwinding after a long day. The apartment is beautifully presented throughout, offering a modern and stylish living environment. The property boasts two bedrooms, both with dressing areas, providing ample storage space. The master bedroom also features an en-suite bathroom for added convenience and privacy as well as a further modern bathroom.

The apartment further benefits from secure intercom entry system, 24 hour concierge and an on site gym.

Situated in a prime location, this apartment is ideal for those looking to immerse themselves in city living. Contact us today to arrange a viewing.

Deposit: £1442
Council Tax Band: C
Minimum Term: 12 months



Hallway

Open Plan Lounge Kitchen

Bedroom 1

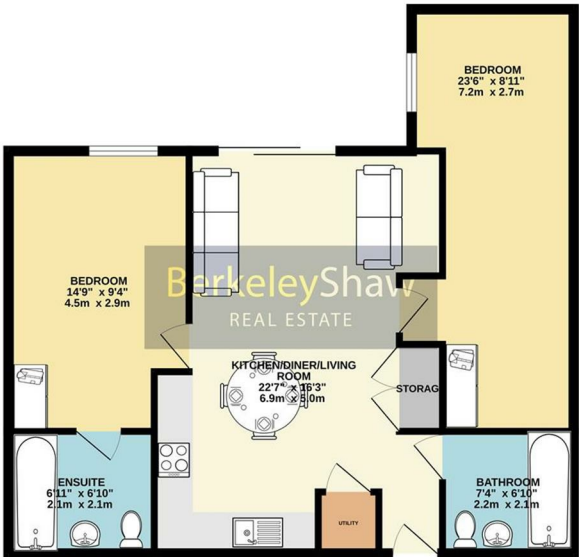
Ensuite Shower Room

Bedroom 2

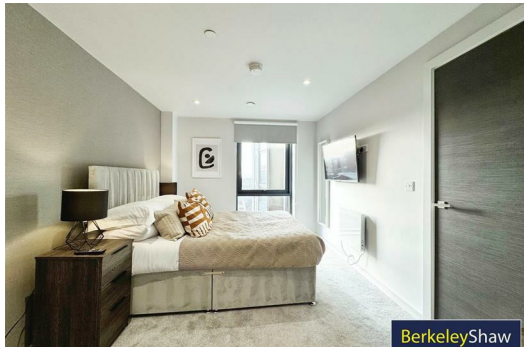
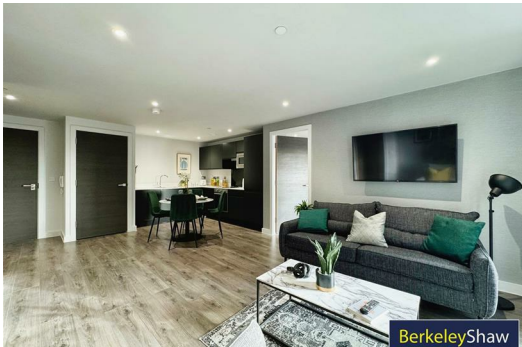
Bathroom

Energy Efficiency Rating			Environmental Impact (CO ₂) Rating		
	Current	Potential		Current	Potential
Very energy efficient - lower running costs			Very environmentally friendly - lower CO ₂ emissions		
(92 plus) A			(92 plus) A		
(81-91) B			(81-91) B		
(69-80) C			(69-80) C		
(55-68) D			(55-68) D		
(39-54) E			(39-54) E		
(21-38) F			(21-38) F		
(1-20) G			(1-20) G		
Not energy efficient - higher running costs			Not environmentally friendly - higher CO ₂ emissions		
England & Wales			England & Wales		
EU Directive 2002/91/EC			EU Directive 2002/91/EC		

GROUND FLOOR



Whilst every attempt has been made to ensure the accuracy of the floorplan contained here, measurements of floor, wall, ceiling, room and any other items are approximate and no responsibility is taken for any error, omission or misstatement. This plan is for illustrative purposes only and should not be used as such by any prospective purchaser. The services, systems and appliances shown have not been tested and no guarantee as to their operability or efficiency can be given.
Made with Homestyler (2024)



Berkeley Shaw Estate Agents Limited.
Company No. 0784754

Berkeley Shaw Real Estate Limited.
Company No. 05206927

