

**BerkeleyShaw**

## 11 Kremlin Drive, Liverpool, L13 7BU

£525 PCM

Nestled in the vibrant city of Liverpool, this charming FURNISHED ROOM ONLY with in a HMO on Kremlin Drive offers an excellent opportunity for those seeking comfortable and convenient living. This well-furnished room is perfect for individuals looking for a private space within a communal setting.

The property features a shared communal area, providing a welcoming environment for socialising and relaxation. The room is thoughtfully furnished, ensuring that you have all the essentials for a comfortable lifestyle.

Situated in a lively neighbourhood, you will find yourself in close proximity to local amenities, shops, and transport links, making it easy to explore all that Liverpool has to offer.

Whether you are a student, a young professional, or simply seeking a fresh start, this room in Kremlin Drive is an ideal choice for anyone looking to enjoy the dynamic lifestyle of Liverpool. Don't miss out on this fantastic opportunity to secure a lovely living space in a city full of life and culture.

Bills Included  
Deposit: 525.00  
Minimum Term: 12 Months



Front Exterior

Communal Hallway

Laundry Room (Basement)

Kitchen Diner

Bedroom

Ensuite Shower Room

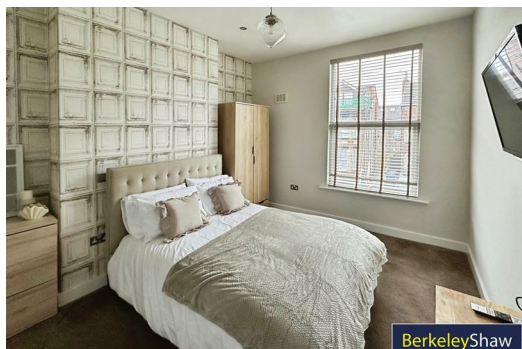
Rear Exterior

Energy Efficiency Rating		
	Current	Potential
Very energy efficient - lower running costs		
(92 plus) <b>A</b>		
(81-91) <b>B</b>		
(69-80) <b>C</b>		
(55-68) <b>D</b>		
(39-54) <b>E</b>		
(21-38) <b>F</b>		
(1-20) <b>G</b>		
Not energy efficient - higher running costs		
<b>England &amp; Wales</b>	EU Directive 2002/91/EC	

Environmental Impact (CO <sub>2</sub> ) Rating		
	Current	Potential
Very environmentally friendly - lower CO <sub>2</sub> emissions		
(92 plus) <b>A</b>		
(81-91) <b>B</b>		
(69-80) <b>C</b>		
(55-68) <b>D</b>		
(39-54) <b>E</b>		
(21-38) <b>F</b>		
(1-20) <b>G</b>		
Not environmentally friendly - higher CO <sub>2</sub> emissions		
<b>England &amp; Wales</b>	EU Directive 2002/91/EC	



BerkeleyShaw



BerkeleyShaw



BerkeleyShaw



Berkeley Shaw Estate Agents Limited.  
Company No. 0784754

Berkeley Shaw Real Estate Limited.  
Company No. 05206927

