



City Quay Ellerman Road, Liverpool, Merseyside L3 4FE

£1,300 PCM

Berkeley Shaw are delighted to offer an apartment that ticks all the boxes, the apartment has been beautifully refurbished and is situated within the City Quay Development set in the heart of Liverpool.

This property is a two Bedroom FURNISHED first floor apartment complete with allocated parking.

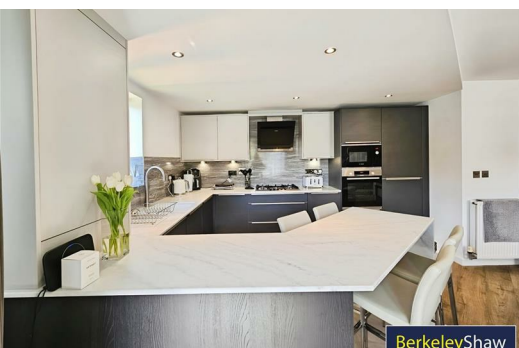
The property comprises of hallway, open plan lounge/kitchen with appliances, two double bedrooms, modern bathroom with gas central heating. This apartment is fully double glazed and has balcony overlooking the lake.

Contact our office to arrange a viewing.

EPC: C

Deposit: £1500

Minimum Term: 12 months



Hallway

Entrance Door , Walk in Storage Cupboard

Open Plan Lounge Kitchen

Double glazed windows and French doors to the balcony, kitchen comprises of a range of fitted base and wall units with granite worksurfaces and breakfast bar, integrated appliances include, oven, microwave gas hob, extractor hood, washer dryer, furnishings include sofa, tv stand, breakfast bar stools

Bedroom 1

Double glazed window, radiator, carpet fitted wardrobes, bed with mattress and bedside tables

Bedroom 2

Double glazed window, radiator, carpet Bed and mattress

Bathroom

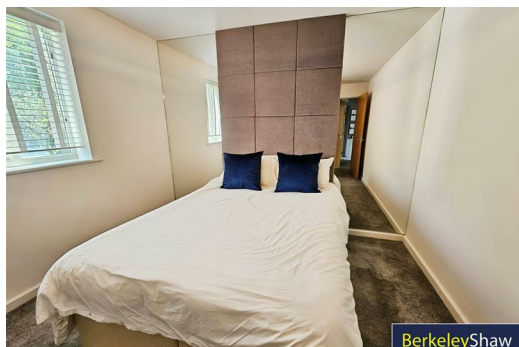
Double glazed window, ladder towel rail, fully tiled walls and flooring with panelled bath with shower over, low level w.c. and sink

Balcony

Over looking lake and fountains

Energy Efficiency Rating		
	Current	Potential
Very energy efficient - lower running costs		
(92 plus) A		
(81-91) B		
(69-80) C		
(55-68) D		
(39-54) E		
(21-38) F		
(1-20) G		
Not energy efficient - higher running costs		
England & Wales EU Directive 2002/91/EC		

Environmental Impact (CO ₂) Rating		
	Current	Potential
Very environmentally friendly - lower CO ₂ emissions		
(92 plus) A		
(81-91) B		
(69-80) C		
(55-68) D		
(39-54) E		
(21-38) F		
(1-20) G		
Not environmentally friendly - higher CO ₂ emissions		
England & Wales EU Directive 2002/91/EC		



Berkeley Shaw Estate Agents Limited.
Company No. 0784754

Berkeley Shaw Real Estate Limited.
Company No. 05206927

