

## 49 Lathom Drive, Liverpool, L31 9DA

£1,100 PCM

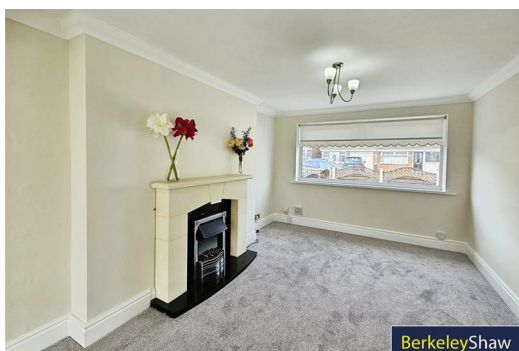
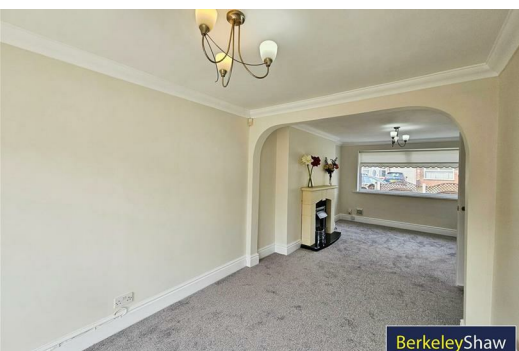
Berkeley Shaw are delighted to introduce for rent this delightful three bedroom semi detached family home. Situated in a popular, residential location of Maghull. Close to local shops, schools, transport links and amenities.

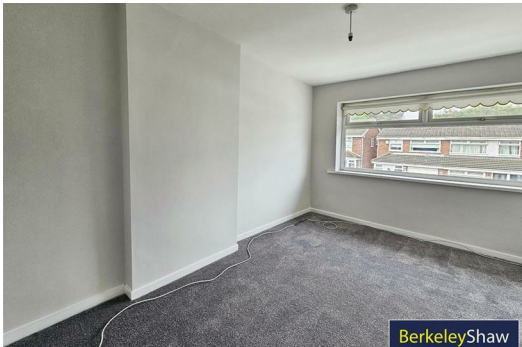
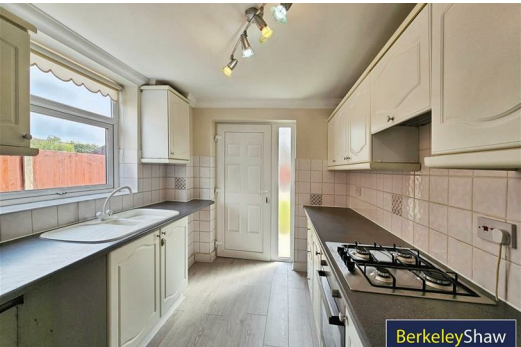
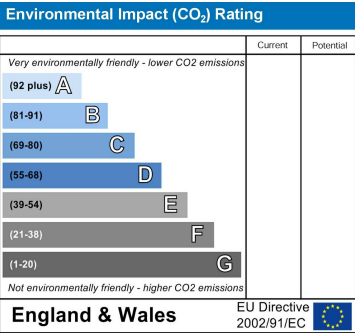
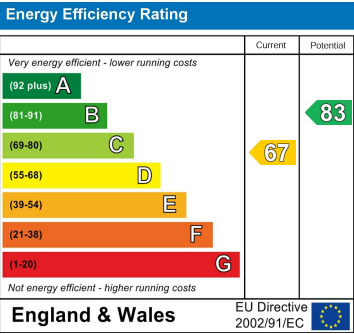
The property briefly comprises of entrance hall, lounge, open plan to dining room and kitchen. To the first floor there are three bedrooms and a bathroom. The property benefits from gas central heating and double glazing, with off road parking, and gardens to the front and rear. Offered with no chain, viewing is highly recommended.

Deposit - £1269.23

EPC D

Council tax band- C





Berkeley Shaw Estate Agents Limited.  
Company No. 0784754

Berkeley Shaw Real Estate Limited.  
Company No. 05206927

