



## Queens Court, 10 Queen Street, Liverpool, L22 5AB

### £950 PCM

FURNISHED Apartment TO LET in the vibrant area of Waterloo this 2/3 apartment in Queens Court, Queen Street offers a delightful blend of comfort and modern living. With two spacious double bedrooms and one Single bedroom / office, this property is perfect for families or professionals seeking a stylish and convenient home.

As you enter, you are welcomed into an inviting open plan lounge and kitchen area, designed to create a warm and sociable atmosphere. This layout not only maximises space but also allows for easy interaction, making it ideal for entertaining guests or enjoying family time. The kitchen is well-equipped, providing all the essentials for culinary enthusiasts.

The apartment features a well-appointed bathroom, ensuring that all your daily needs are met with ease. Additionally, single bedroom that can serve as a versatile space for relaxation or work, depending on your lifestyle.

For those with a vehicle, the convenience of parking for one vehicle is a notable advantage, allowing for easy access to the surrounding areas.

Situated in a lively neighbourhood, this apartment is close to local amenities, parks, and transport links, making it an excellent choice for those who appreciate both tranquillity and accessibility.



## Hallway

Entrance door, laminate flooring, electric wall heater

## Open Plan Lounge Kitchen

Double glazed windows, laminate flooring, electric wall heater, kitchen comprises of a range of fitted base and wall units with a stainless steel sink with mixer tap, oven and hob and extractor hood, washing machine, Fridge./ freezer.

furnishings include, dining table and chairs, sofa, arm chairs, side board and TV

Please note that the landlord will not repair or replace any freestanding electrical items if the fall in to need of repair.

## Bedroom 1

Double glazed window, curtains, carpet electric wall heater, furnishings include Bed and Mattress, wardrobe, bedside tables, chest of drawers

## Bedroom 2

Double glazed window, curtains, carpet electric wall heater, furnishings include Bed and Mattress, bedside tables

## Bedroom 3

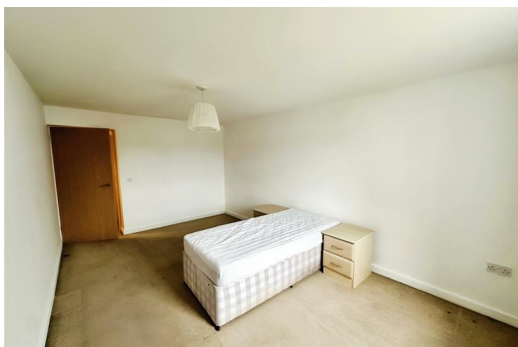
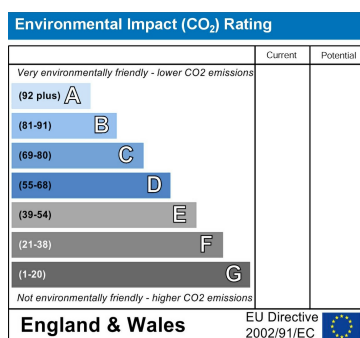
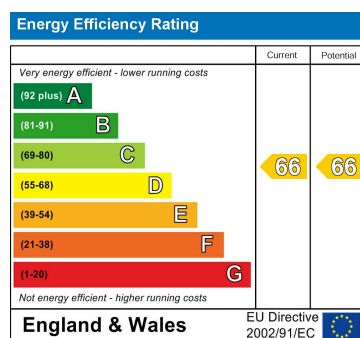
Double glazed window, curtains, carpet electric wall heater

## Bathroom

part tiled walls and flooring, bathroom comprises of a 3 piece bathroom suite including panelled bath with shower over, sink and wc, ladder towel warmer

## Exterior

Communal Gardens and parking



Berkeley Shaw Estate Agents Limited.  
Company No. 0784754

Berkeley Shaw Real Estate Limited.  
Company No. 05206927

