



32 Grasmere Road, Liverpool, L31 6BX

Asking Price £290,000

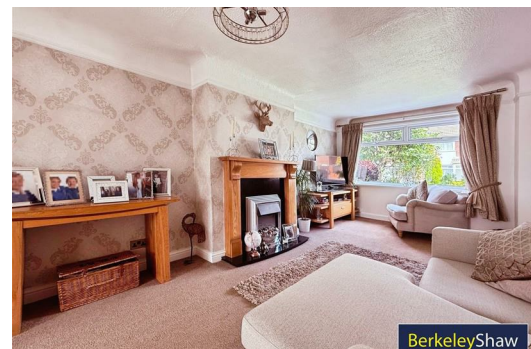
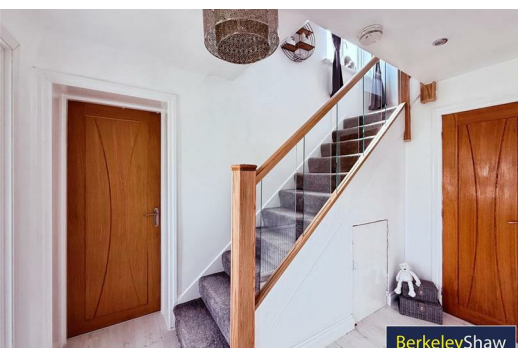
A Spacious & Stylish 5-Bedroom Family Home with South-Facing Garden

Set on a sought-after residential road popular with families, this beautifully extended five-bedroom semi-detached home offers generous accommodation, modern finishes, and outstanding outdoor space — perfect for growing families, require multiple HOME OFFICES and those who enjoy entertaining.

To the front, the property benefits from a gated driveway providing secure off-street parking. Step inside to a stylish entrance hall, featuring a NEWLY installed oak and glass balustrade staircase — a lovely contemporary touch.

The ground floor offers a bright and airy lounge, flowing seamlessly into the dining area via a wide opening. Large sliding PATIO DOORS lead directly onto the sun-soaked, decked patio — ideal for al fresco dining and summer barbecues. The SOUTH-FACING GARDEN garden also features a well-maintained lawn, making it perfect for children and pets to play.

The crisp, white B&Q kitchen — fitted just three years ago — includes an eye-level oven and integrated appliances and striking geometric-tiled cushion flooring, blending functionality with a fresh, MODERN look. Additionally, the CONVERTED GARAGE provides two ground-floor bedrooms, offering flexibility as guest rooms, a home office, or playrooms.



- Hall
- Lounge
- Dining Room
- Kitchen
- Landing
- Bedroom 4
- Bedroom 5
- Bedroom 1
- Bedroom 2
- Bedroom 3
- Bathroom

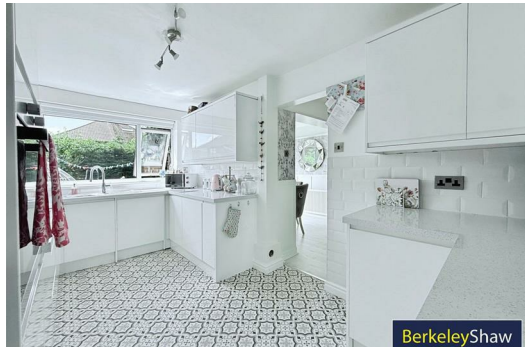
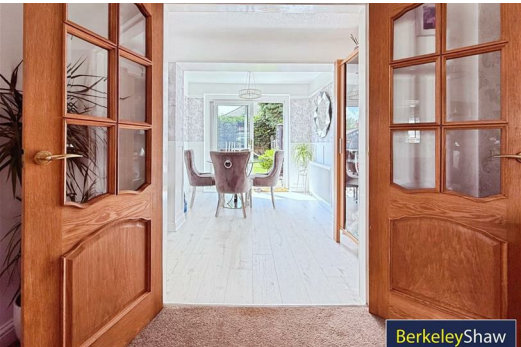
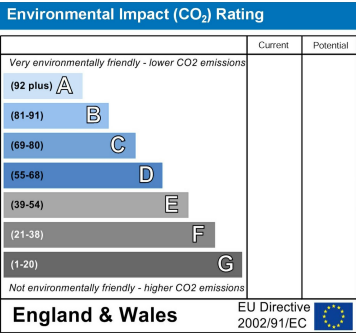
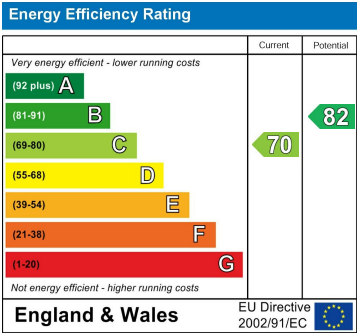
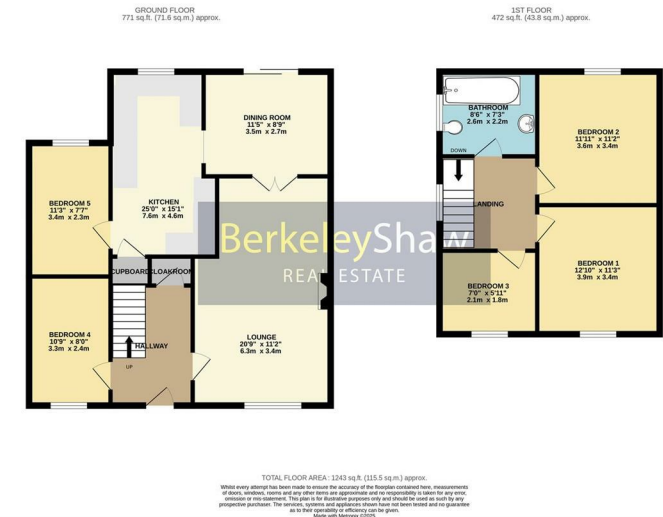
SINGLE to the ground floor.

SINGLE to the ground floor

DOUBLE

DOUBLE

SINGLE



Berkeley Shaw Estate Agents Limited.
Company No. 0784754

Berkeley Shaw Real Estate Limited.
Company No. 05206927

