



## Waterloo Warehouse Waterloo Road, Liverpool, L3 OBH

### Offers Over £230,000

#### Two-Bedroom Duplex Apartment With Water Views In The Iconic Waterloo Warehouse

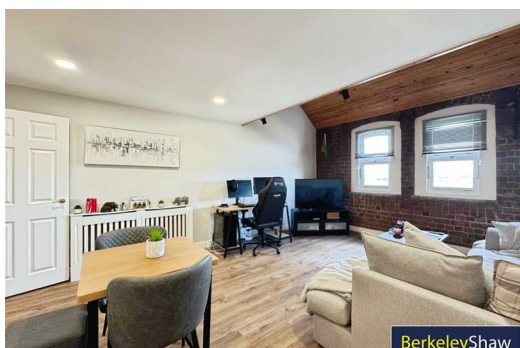
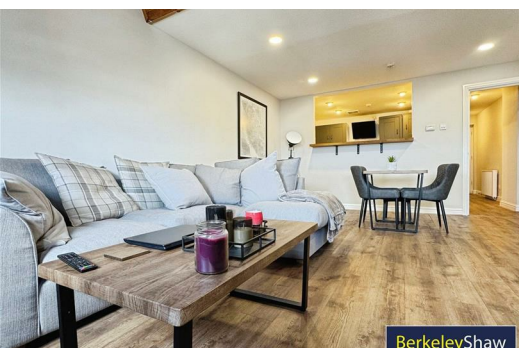
Berkeley Shaw are delighted to bring to market this spacious fifth-floor two-bedroom duplex apartment, located in the highly sought-after Waterloo Warehouse development. Offering a generous floor area of approximately 1,200 sq. ft, this Grade II listed conversion effortlessly combines historic charm with modern living.

From the moment you enter, this exceptional home offers real 'wow' factor. Original exposed brickwork, industrial beams and vaulted ceilings give the apartment a unique sense of character and space.

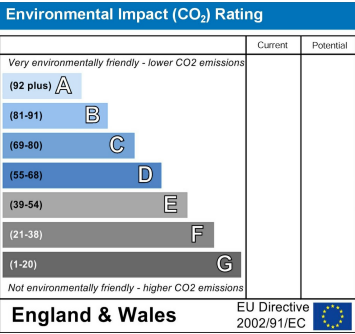
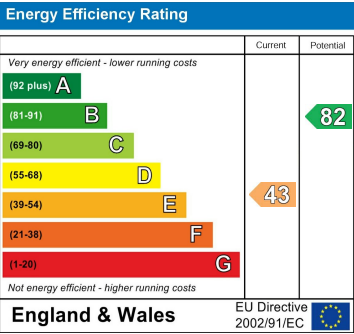
The accommodation is arranged over two floors. A welcoming entrance hall leads to a modern fitted kitchen with integrated appliances, including a fridge, freezer, dishwasher, washing machine, hob with extractor, and double oven. The spacious open-plan living and dining area is filled with natural light and provides fantastic views over the docks and River Mersey.

Upstairs, you'll find a master bedroom with dressing area and an en-suite bathroom, a further double bedroom with fitted storage and a family bathroom ideal for guests.

The apartment forms part of a secure gated development with 24-hour concierge service, and benefits from an allocated parking space along with additional visitor parking. Gas central heating and double glazing are







Berkeley Shaw Estate Agents Limited.  
Company No. 0784754

Berkeley Shaw Real Estate Limited.  
Company No. 05206927

