



Bronshill The Serpentine South, Liverpool, L23 6XG

£950 PCM

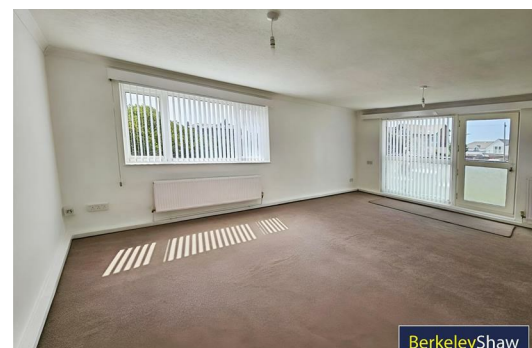
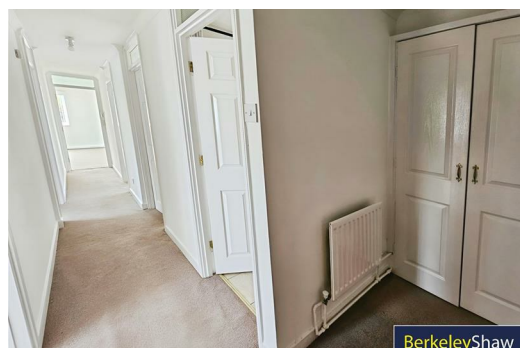
Berkeley Shaw are delighted to present this well-appointed two-bedroom flat, available to let on the first floor, boasting delightful sea views and a wealth of modern features. Neutrally decorated throughout, this property creates a welcoming, versatile space suitable for a wide variety of furnishing styles.

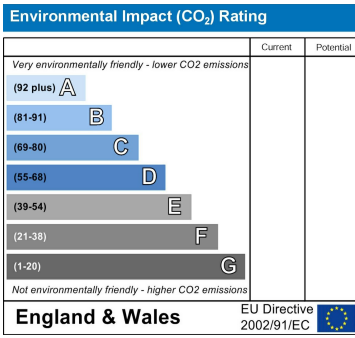
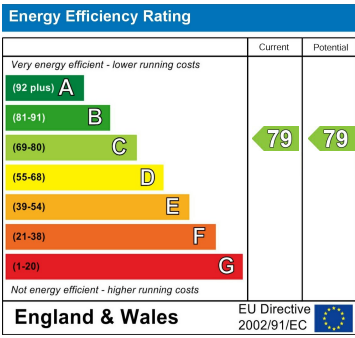
The accommodation comprises a generous reception room, flooded with natural light thanks to large windows and providing seamless access to the private balcony—perfect for enjoying the picturesque outlook and alfresco dining. The separate kitchen is both stylish and functional, complete with attractive wood cupboards and ample natural light, making it an inviting setting for meal preparation and casual dining.

Both bedrooms are comfortable doubles, each benefitting from built-in wardrobes that optimally use space while offering abundant storage solutions. The modern bathroom is well-designed and fitted with contemporary fixtures and finishes.

This first-floor flat not only offers superb views but also excellent convenience, with every detail carefully considered to ensure comfort and ease of living.

In summary, this neutrally decorated flat stands out for its practical layout, abundance of natural light, and desirable extras such as the balcony with sea views. Early viewing is highly recommended to secure this inviting coastal home. For further information or to arrange a viewing, please contact our office today.





Berkeley Shaw Estate Agents Limited.
Company No. 0784754

Berkeley Shaw Real Estate Limited.
Company No. 05206927

