



**BerkeleyShaw**

## 12 Drey Close, Liverpool, L37 6FT

### Offers Over £335,000

**\*\*WOW! Stunning 3-Storey Home in Desirable Pinewood Park, Formby\*\***

Welcome to this immaculately presented, semi-detached home set across three spacious storeys in the sought-after Pinewood Park development, built in 2021. Stylish, modern, and move-in ready, this exceptional property has been lovingly maintained by its current owners and offers contemporary living at its very best.

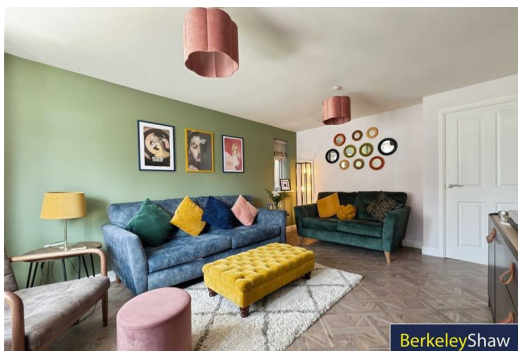
Step into the beautifully bright and welcoming front lounge, complete with a charming bay window that floods the space with natural light. To the rear, you'll find a sleek and fully-equipped dining kitchen featuring integrated appliances and patio doors that open onto the sunny, south-facing garden—perfect for summer entertaining or relaxed family meals.

The first floor hosts two generously sized double bedrooms, ideal for guests or children, along with a tastefully finished family bathroom. The entire second floor is dedicated to an impressive main bedroom suite, offering a luxurious retreat with its own stylish en-suite shower room and ample space for wardrobes and relaxation.

Outside, the property continues to impress with off-road parking for two cars at the front and a well-maintained rear garden laid to lawn, bathed in sunlight throughout the day.



**BerkeleyShaw**

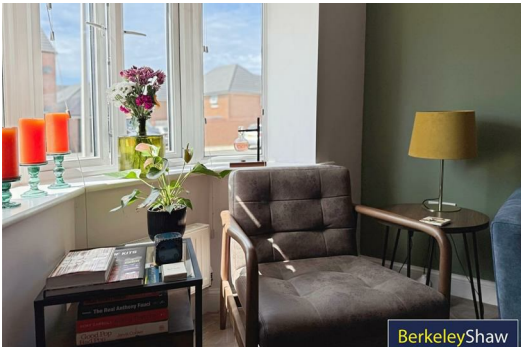
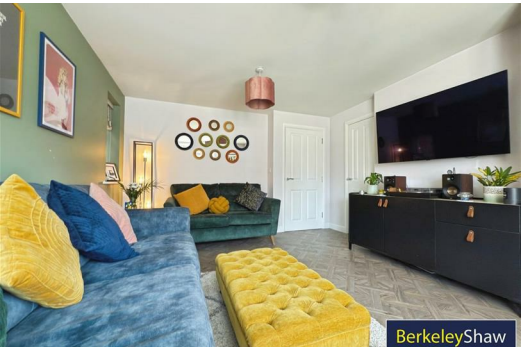
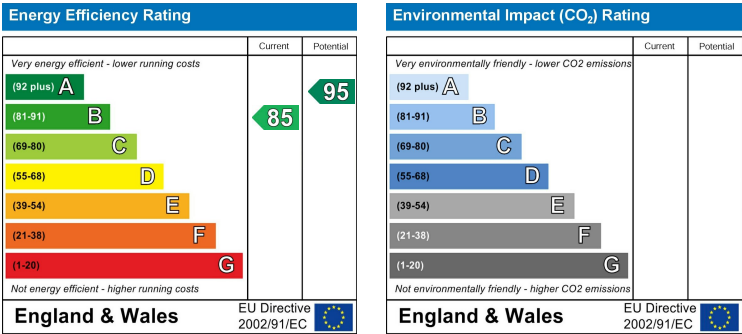


**BerkeleyShaw**



**BerkeleyShaw**

- Hall
- Downstairs WC
- Lounge
- Kitchen/Dining Room
- Bedroom 2
- Bedroom 3
- Family Bathroom
- Bedroom 1
- Ensuite Shower Room



Berkeley Shaw Estate Agents Limited.  
Company No. 0784754

Berkeley Shaw Real Estate Limited.  
Company No. 05206927

