



4 Ronald Road, Liverpool, L22 3XU

Offers Over £450,000

Berkeley Shaw Real Estate is delighted to present this spacious six-bedroom semi-detached home on the ever-popular Ronald Road, Waterloo. Set across three floors, this substantial property offers exceptional potential for a wide range of buyers — from families seeking versatile living space to investors looking for a promising project.

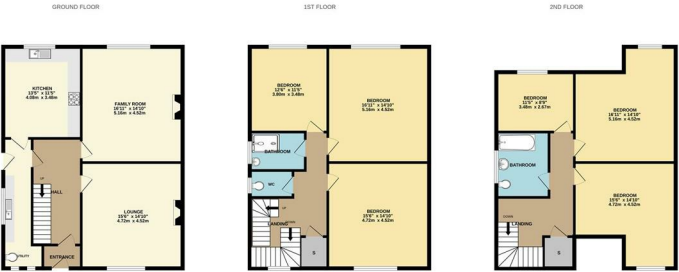
With six generously sized bedrooms, this home is perfectly suited for multi-generational living, growing families, or those requiring space for a self-contained apartment. The accommodation comprises a welcoming vestibule and spacious entrance hall, leading to a bright front lounge, ideal for entertaining. To the rear, a large family room overlooks the garden, while the kitchen diner provides ample storage and dining space, complemented by a utility room/WC.

The first floor offers three double bedrooms and a modern shower room with separate WC, while the top floor boasts three further bedrooms and an additional bathroom — previously used as a separate apartment setup.

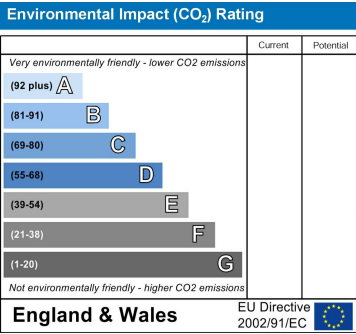
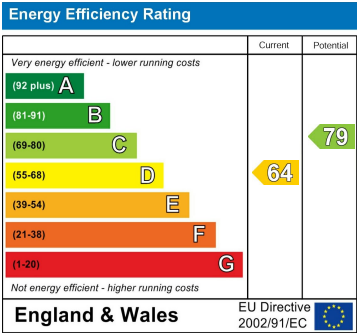
Externally, the property benefits from a generous front garden with driveway parking and a spacious rear garden complete with outbuildings, offering excellent scope for further development or outdoor living enhancements.



- Vestibule
- Entrance hall
- Landing
- Lounge
- Family room
- Kitchen diner
- Utility room/WC
- Landing
- Bedroom 1
- Bedroom 2
- Bedroom 3
- WC
- Shower room
- Upper landing
- Bedroom 4
- Bedroom 5
- Bedroom 6
- Bathroom
- Front elevation
- Rear garden



While every attempt has been made to ensure the accuracy of the Brochure contained here, measurements of floors, windows, rooms and other features are approximate and no responsibility is taken for any errors. Prospective purchasers should verify the accuracy of the information and measurements given in this brochure. The services, systems and appliances shown have not been tested and no guarantee can be given as to their condition or efficiency at the time of writing.



Berkeley Shaw Estate Agents Limited.
Company No. 0784754

Berkeley Shaw Real Estate Limited.
Company No. 05206927

