



34 Brentwood Avenue, Liverpool, L23 2UZ

£425,000

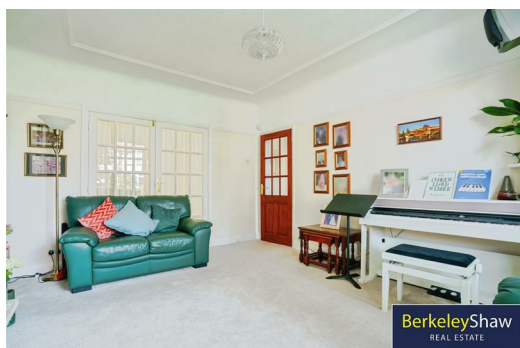
Brentwood Avenue, Crosby – Spacious Four-Bedroom Semi-Detached | Prime Location for Families

Berkeley Shaw are delighted to present to the market this substantial four-bedroom semi-detached family home, situated on the highly sought-after Brent Avenue in Crosby. Offering generous living space throughout and set within beautifully maintained gardens, this property is ideally suited to families looking to settle in a desirable and well-connected location.

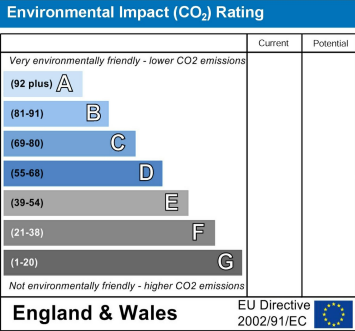
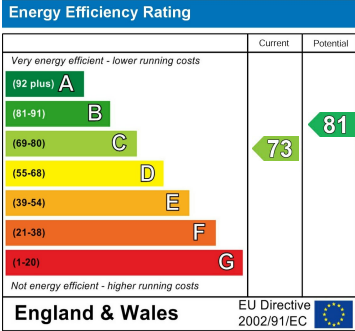
Perfectly positioned for access to excellent local schools, including both primary and secondary options rated highly by Ofsted, this home also benefits from being just a short stroll from Crosby Village, which boasts a fantastic selection of independent shops, cafes, restaurants, and bars.

Commuters will appreciate the areas excellent transport links, with easy access to the M57 and major road networks. The area also has rail services into Liverpool city centre and beyond.

The accommodation briefly comprises a welcoming porch and spacious entrance hallway with understairs WC. To the front is a bright, bay-fronted lounge, while to the rear, a generous family room opens directly onto the garden—perfect for everyday family life or entertaining. The kitchen diner is the true heart of the home, offering ample storage, a range of integrated appliances, and plenty of space for dining or hosting.



- Porch
- Entrance hall
- WC
- Lounge
- Family room
- Kitchen diner
- Landing
- Bedroom 1
- Bedroom 2
- Bedroom 3
- Bedroom 4
- Bathroom
- Front elevation
- Rear garden



Berkeley Shaw Estate Agents Limited.
Company No. 0784754

Berkeley Shaw Real Estate Limited.
Company No. 05206927

