



BerkeleyShaw

6 Buttermere Gardens, Liverpool, L23 0SF

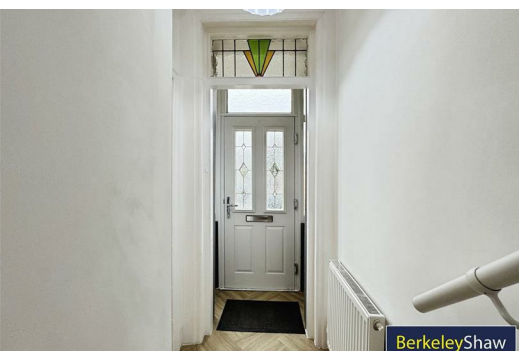
Offers Over £220,000

Turnkey Extended Three-Bedroom Home – Buttermere Gardens, Crosby
Perfect for First-Time Buyers, Families, Downsizers & Investors | No Onward Chain

Welcome to this beautifully renovated three-bedroom mid-terraced home on the ever-popular Buttermere Gardens in Crosby. Stylishly updated throughout, this turnkey property is ready for immediate occupation and perfectly suited to a wide range of buyers—from first-time purchasers and growing families to those looking to downsize or invest in a high-demand rental area.

Ideally positioned, this home benefits from excellent local schools, a strong transport infrastructure with great commuter links, and a wide selection of shops, cafes, and leisure facilities nearby—making day-to-day living both convenient and enjoyable.

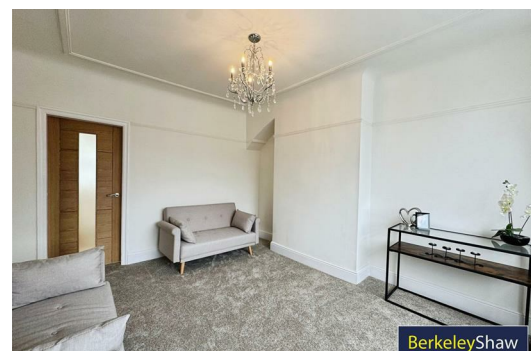
Upon entry, a welcoming porch leads into a bright entrance hall, setting the tone for the well-maintained interiors. To the front, a generously sized bay-fronted living room offers a cosy yet spacious retreat, while to the rear, a separate dining room provides the ideal setting for entertaining or enjoying family meals. This space flows seamlessly into a modern fitted kitchen, complete with a range of integrated appliances and direct access to the paved rear yard, perfect for enjoying the sunshine.



BerkeleyShaw

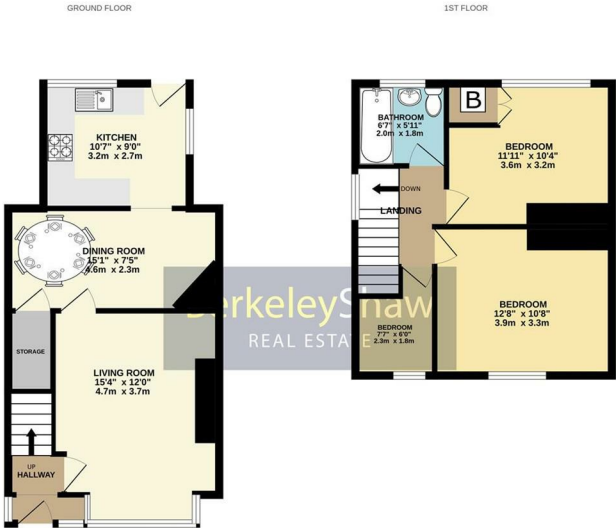


BerkeleyShaw

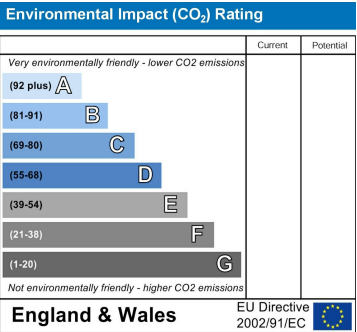
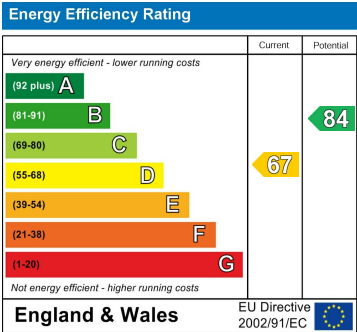


BerkeleyShaw

- Porch
- Entrance hall
- Living room
- Dining room
- Kitchen
- Landing
- Bedroom 1
- Bedroom 2
- Bedroom 3
- Bathroom
- Front elevation
- Rear yard



Whilst every effort has been made to ensure the accuracy of the figures contained here, measurement of floor, surface, volume and any other items are approximate and no responsibility is taken for any errors, omissions or misstatements. This plan is for illustrative purposes only and should be used as a guide only for prospective purchasers. The services, systems and appliances shown have not been tested and no guarantee can be given as to their operation or efficiency for the given. Plans will be shown in black.



Berkeley Shaw Estate Agents Limited.
Company No. 0784754

Berkeley Shaw Real Estate Limited.
Company No. 05206927

