



14 Ferndale Road, Liverpool, L22 9QW

Asking Price £240,000

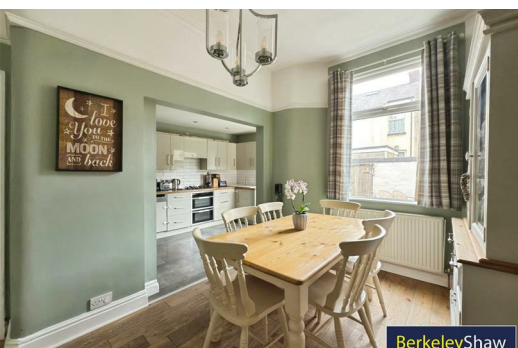
Welcome to this charming terraced house filled with character features located on Ferndale Road in the vibrant area of Waterloo, Liverpool. This delightful property is perfect for first-time buyers seeking a home in a lively neighbourhood filled with independent shops and restaurants, offering a wonderful community atmosphere.

As you enter, you will find two inviting reception rooms that provide ample space for relaxation and entertaining. The heart of the home is the open-plan kitchen and dining room, designed to maximise space and create a warm, welcoming environment for family gatherings and dinner parties. The multi fuel log burner offers a welcoming focal point in the winter months. The modern kitchen is well-equipped, making it a joy to cook and entertain.

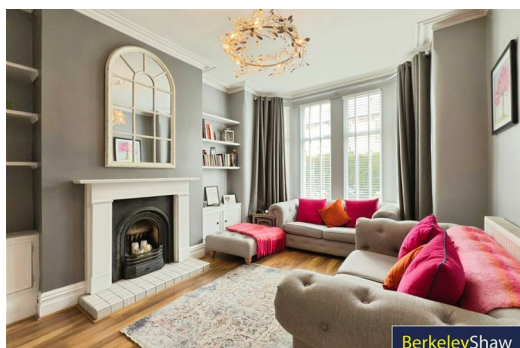
This lovely house boasts three comfortable bedrooms, providing plenty of room for a growing family or guests. The bathroom is conveniently located, ensuring ease of access for all and has been cleverly extended to include a full-size bath and shower cubicle. The loft space has a fixed ladder, lighting and is floorboards so ideal for a storage space or ripe for conversion.

Step outside to discover a stunning family-friendly yard/garden, perfect for children to play and for hosting summer barbecues. This outdoor space is a true gem, offering a peaceful retreat yet you also have Crosby beach and parks on your doorstep to walk four legged friends and enjoy the outdoors.

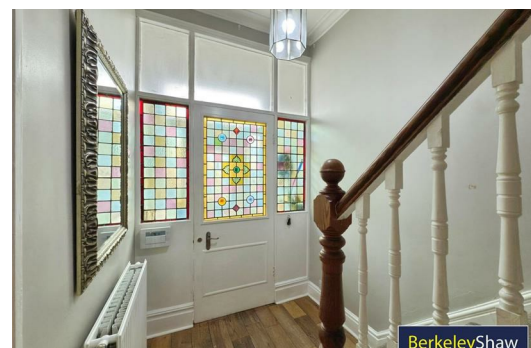
With its ideal location, spacious layout, and delightful outdoor area, this property is a fantastic opportunity for those looking to establish themselves in a thriving community. Don't miss your chance to make this charming house your new home.



BerkeleyShaw



BerkeleyShaw

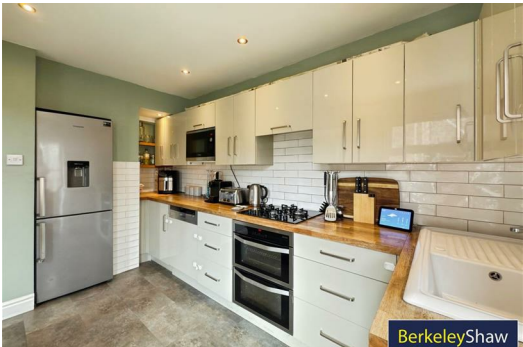
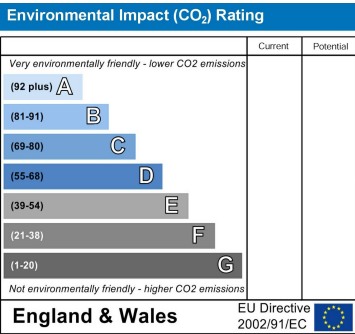
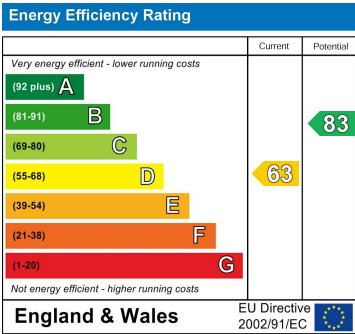


BerkeleyShaw

- Hall
- Front Lounge
- Kitchen
- Dining Room
- Rear Outside
- Landing
- Bedroom 1
DOUBLE
- Bedroom 2
DOUBLE
- Bedroom 3
SINGLE
- Bathroom



While every attempt has been made to ensure the accuracy of the floorplan contained here, measurements of floor, window, room and any other items are approximate and no responsibility is taken for any errors, omission or mis-statement. This plan is for illustrative purposes only and should be used as such by any prospective purchaser. The agents accept no liability for any errors or omissions. Made with Metaphor 12/2025



Berkeley Shaw Estate Agents Limited.
Company No. 0784754

Berkeley Shaw Real Estate Limited.
Company No. 05206927

