



27 Lady Green Lane, Liverpool, L38 1QB

£1,000 PCM

Berkeley Shaw Real Estate are delighted to present a delightful two-bedroom bungalow. This neutrally decorated home enjoys a peaceful rural location surrounded by green spaces and scenic walking routes, ideal for those seeking tranquillity and access to nature.

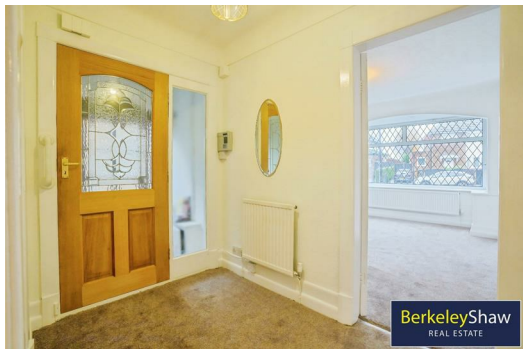
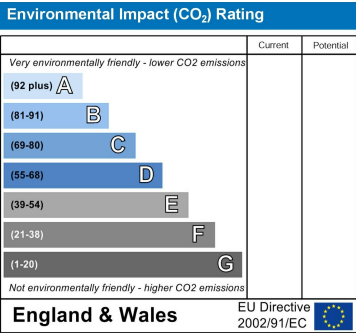
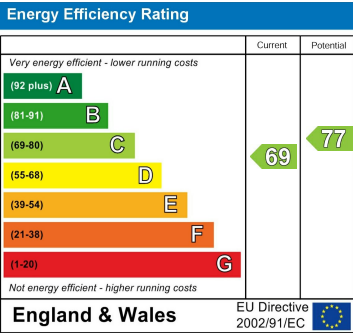
Internally, the property comprises one spacious open-plan reception room, illuminated by large windows that offer stunning garden views and fill the space with natural light. The inviting fireplace adds warmth and character, creating a perfect setting for comfortable living and entertaining.

The property features a well-appointed kitchen, enhanced by ample natural light, contributing to a bright and welcoming atmosphere for meal preparation and dining. Both bedrooms are doubles, with the principal bedroom benefiting from built-in wardrobes for convenient storage.

The bathroom is equipped with a shower seat, offering an added level of comfort and accessibility.

Externally, the attractive garden provides a private outdoor haven—ideal for relaxation or social gatherings—whilst the single garage offers secure parking or additional storage options.





Berkeley Shaw Estate Agents Limited.
Company No. 0784754

Berkeley Shaw Real Estate Limited.
Company No. 05206927

