



Apt. 139 Unity Building, Liverpool, Merseyside L3 9BW

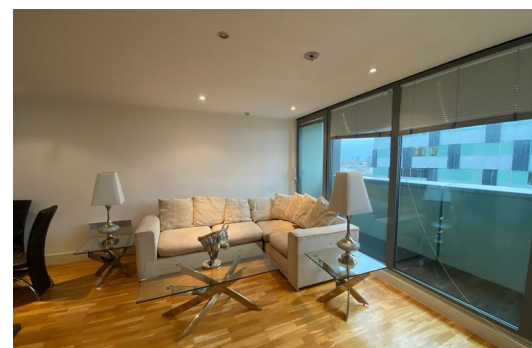
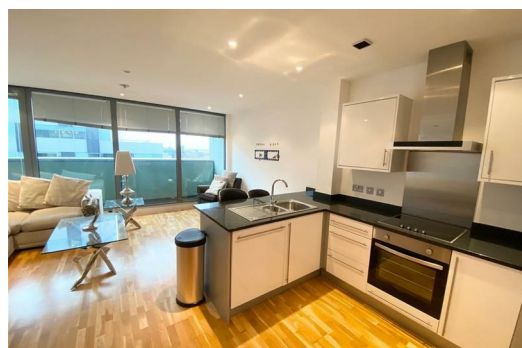
£1,350 PCM

Berkeley Shaw we are pleased to offer TO LET this two bedroom FURNISHED duplex apartment situated on the 16th floor of the Unity Building. The property offers magnificent views of Liverpool's Three Graces and the River Mersey from the living area and bedrooms. The Apartment briefly comprises entrance hallway, bedroom and bathroom to the upper floor and to the lower floor the master bedroom and En suite and the open plan kitchen/living area with balcony. The property also benefits from a secure allocated parking space.

Deposit :£1350

Council Tax: Band D

Lease Length: minimum 12 months



Hallway

Wooden flooring Staircase to lower floor

Shower Room

Fully Tiled, walk in shower cubical with shower, sink and low level w.c.

Bedroom 2

Two Double Glazed windows, carpet, electric wall heater

Lower Hallway

Staircase to first floor, wood flooring

Open Plan Lounge Kitchen

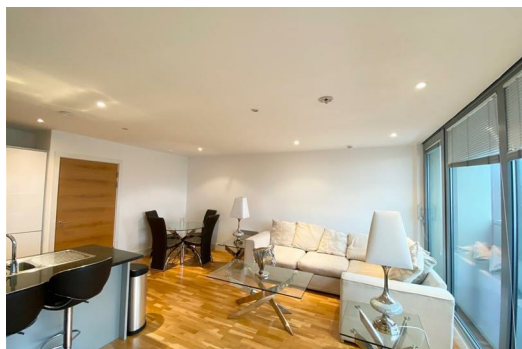
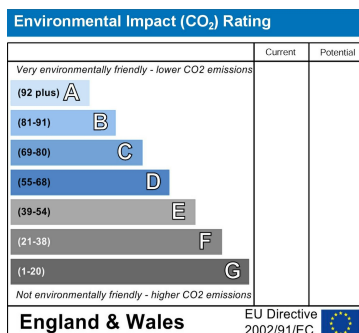
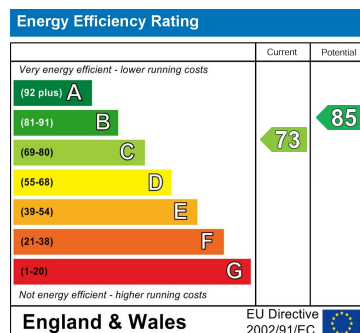
Double glazed skidding patio door, wooden flooring, electric heaters kitchen comprises of high gloss fitted base and wall units ontegrated appliances include:-, fridge/ freezer, washing machine, dishwasher, hob, oven, Furnishings include Corner group sofa, dining table and chairs, coffee table, side tables, lamps television unit.

Bedroom One

Two Double glazed windows, carpet, electric heaters, furnishings include Bed and Mattress, chest of drawes x 2, wardrobes bedside cabinets

Ensuite Bathroom

Fully tiled, bath with shower over, glass shower screen, sink and low level w.c.



Berkeley Shaw Estate Agents Limited.
Company No. 0784754

Berkeley Shaw Real Estate Limited.
Company No. 05206927

